

BA-888

FOR ALL CEMENTITIOUS PRODUCTS

BA-888 is a special formulated homopolymer bonding agent for the latest construction needs like tiles overlay and tiling without back screed. It has special plasticiser agent added to improve bonding strength for various substrates and suitable for all cementitious products

Where To Use

- New and old cement plastered surfaces.
- Cemboard, wood, metal, ceramic/ porcelain tiles, concrete substrate, brick and marble surfaces.
- Tile on tile, marble on marble or granite on granite.
- Designed for indoor application.
- Pebble wash to any solid substrate.
- Concrete top up.
- Metal door and window frames.
- Window coping installation.

Application Instructions

- Surface preparation - The surface must be structurally sound and clean, free of oil, grease, wax, dust sand, dirt, laitance, paints, efflorescence, curing compounds, loose materials of any type. If the surface is questionable, apply a small test patch of **BA888**. Allow to completely dry and observe for any sign of lifting, wrinkling, peeling or curling. If these occurred, additional surface preparation is recommended. Recommending cleaning methods by washing or high-pressure water jets.
- **BA888** can be applied with paint roller of paint brush.
- Do not dilute with water or solvent. Do not add any admixture.
- Do not use water soluble materials such as glue, calcimine, wall paper, casein-based adhesive or where constant moisture is present.
- Never shake and box mixed as to entrap air bubbles.
- Approximately 30 minutes of drying time, subsequent activities can be carried out (eg plastering or tiling). Subsequent application of plastering, skim coating and cement mortar for tiling shall be performed within 14 days provided **BA888** condition is clean, dust free, uncontaminated and intact.
- Do not apply to wet surface where there may be hydrostatic pressure such as retaining walls and swimming pool.
- Do not apply to frozen or frost covered surface or the temperature is below 50°F (10°C).

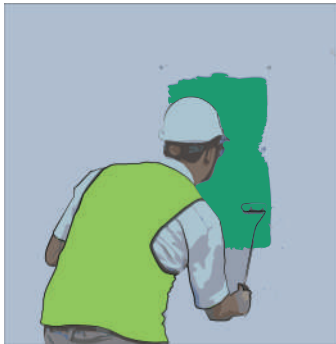
BA-888

Product Data

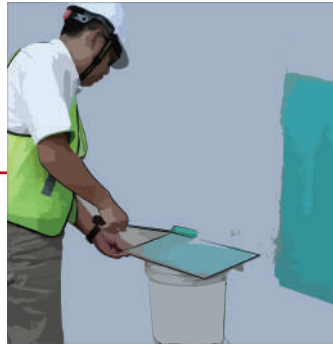
Packaging	20 Liter / Pail
Colour	Green
Application Method	Can be applied with paint roller or paint brush
Coverage	Approximately 18m ² - 20m ² / liter depending on the method of application, temperature, porosity and texture of the substrate/ surface.
Drying Time	Approximately 30 minutes after applied, depending on the temperature and humidity (18 °C- 45°C).
Open Time	14 Days
Fire Hazard	Non-flammable
Toxicity	Non-toxic
Shelf Life	12 Months
Storage	Store in protected areas where ambient temperature is between 50 °F- 90°F (10 °C- 37°C).
Clean Up	Cleaning may be accomplished with water immediately after use.



Work Sequence for BA-888



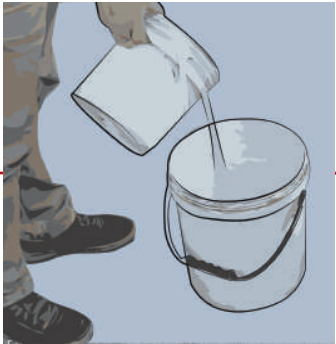
1. A layer of BA-888 on substrate



2. A layer of unbroken film of BA-888 to rear side of tiles



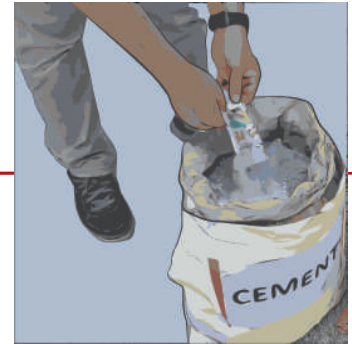
3. Wait until surface dry estimate 30 minutes - 1 hour (Depending on weather condition)



6. Mix with Water (7.5L-8.5L)



5. Mix CretePlus-Te + Cement + Sand (Optional)



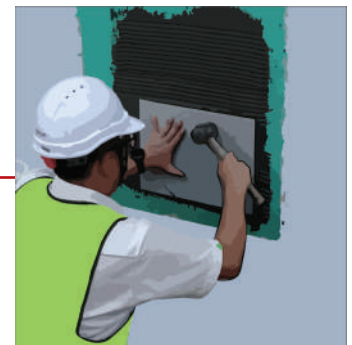
4. Creteplus-TE (120g) + Cement (25kg) (Dry mix)



7. Stir Evenly

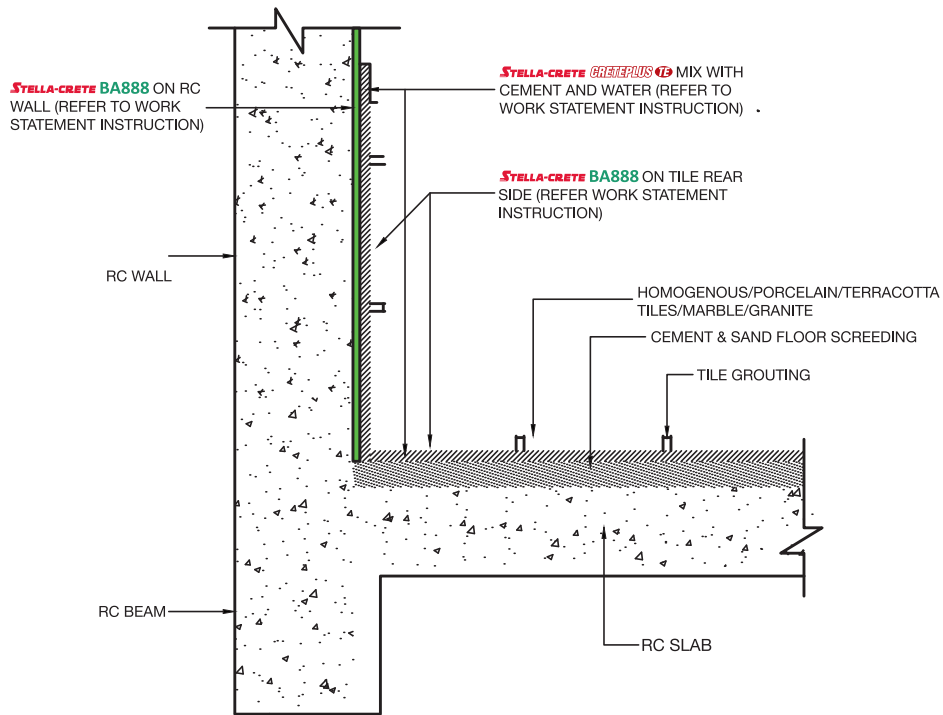


8. Apply grout (Creteplus-TE + Cement + Water) to the tile



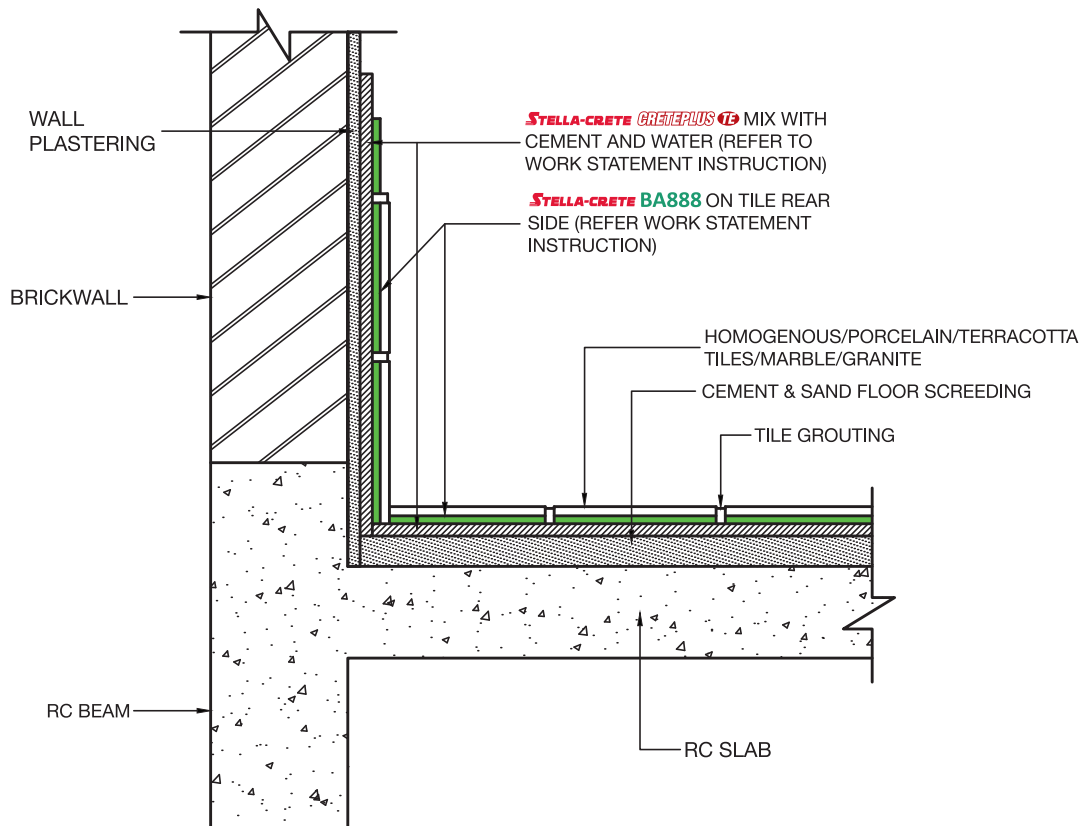
9. Direct tiling to the substrate

BA-888



TYPICAL SECTION STELLA CRETE AT RC WALL & SLAB

SCALE 1:10



TYPICAL SECTION STELLA CRETE AT RC RC SLAB & BRICKWALL

SCALE 1:10