



permeable paving



product information

product	I pave
code	IP60
dimensions	200 x 100 x 60mm
weight	2.30 kg
strength (28 days)	25 N/mm ²
pcs per sq.m	48
suitable application	pedestrian, carpark, domestic carpark
available colours	natural, charcoal, quarry red
pcs / pallet	720
avg. weight / pallet	1,660 kgs



brikform

Features



Cost effective

Environmentally Sensitive

Benefits

Interlocking system & Non-interlocking system.
Permits the water to drain through the surface into the layers below.

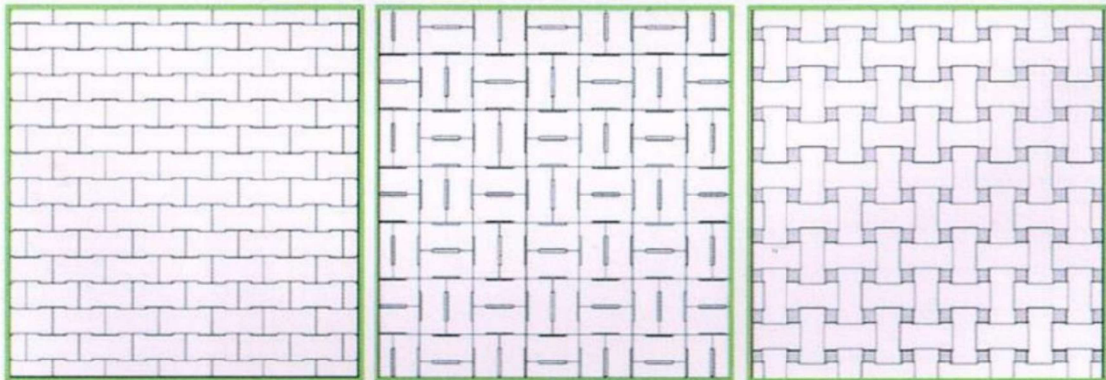
Minimal maintenance costs.
Reduces the load on existing drainage system.
Reduces the need for additional surface drainage.
Reduces the need for costly underground retention systems.



Helps restore and maintain the natural water table.
Controls surface run-off that can lead to soil erosion.
Maintains air and water supplies to trees and landscaped areas.
Alleviates drainage, downstream flooding and pollution problems.

The need for a pervious concrete paving unit that allows water to permeate the soil has become increasingly important. With more and more paved areas such as streets, parking lots and sidewalks, rainwater has little opportunity to filtrate into the soil.

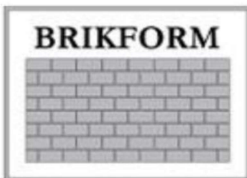
With urban development comes excessive storm water runoff. Stormwater runoff occurs in urban and suburban areas where impervious surfaces such as street, parking lots and sidewalks prevent rainwater from absorbing into soil. As water runs across these surfaces, it collects contaminants and deposits them into stormdrains or directly into receiving water such as rivers and lakes. As water are polluted, they not only become unusable to people, they become a dangerous environment for fish and aquatic life.



0% Aperture Pattern.
A non-permeable
pattern and uses
4.8 pcs/sq.ft.

6% Aperture Pattern.
A permeable
pattern and uses
4.5 pcs/sq.ft.

9% Aperture Pattern.
A permeable
n and uses
cs/sq.ft.



Brikform Sdn. Bhd.

(962644-39)
Lot 58, 1H KKIP Selatan, Industrial Zone 2,
88450 KKIP, Kota Kinabalu, Sabah.
☎ 088 - 494 266 ☎ 088 - 494611
📞 016 - 888 0823 Clementina (Sales)
017 - 854 3716 Pauline / Evie
✉ infestambfif@hotmail.com / brikform_sb@yahoo.com



we put concrete into shapes . . .

2019 brikform sdn. bhd. All Rights Reserved Version 4