



Usage of UPVC expansion joint are used as a divider line to separate two or more different type of floor sections in one area. Suitable to install at pedestrian walkway and overhead walk bridge.

It absorb movement caused by shrinkage, substrate expansion, contraction and vibration. able to minimize cracks on tiles and cement surface at large area



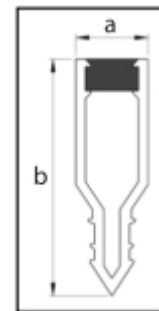
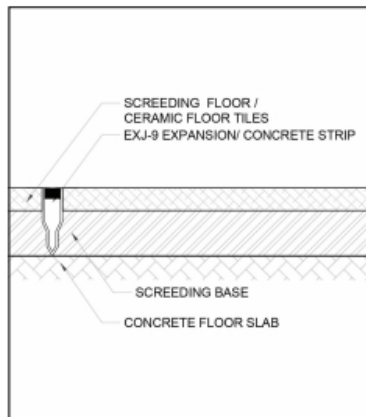
Comparison between traditional manual work or applying UPVC Floor Expansion Joint:

Subject 1: Workmanship and Material Cost for Floor Screeding

Traditional Manual Work Disadvantages	Expansion Joint Application Advantages
<p>Floor screeding works involve high utilization of labours and materials:</p> <ul style="list-style-type: none"> - Make divider marking line. - Use concrete groove cutter to cut a gap line for expansion purpose. - Use water to clean out dust from gap line, after that fill in silicon. <p>The manual floor cutting done upon completion of floor screeding works</p> <ul style="list-style-type: none"> - Difficult to achieve clean cut. - crack occur easily along the cutting line. <p>With a volume of concrete intended for the designated area for screed concreting work on the same day, it would require to purchase and fix the wood surrounding. This temporary stopper wood required to be dismantled and reuse on the next day, in order to continue the work.</p> <p>Common defects with water accumulation in the middle of the floor area:</p> <p>It is done by starting from the drainage line for paving floor screeding, upon reaching the middle part, there is no clear guideline to follow for paving. To continue the paving process, the rough gauge based on visual estimation are used as a guide to progress the works as a portion by portion gradually until completion, without drainage line as a guide. After the completion of the floor screeding, there will be water stagnation on the floor after the rain. This method will lead to repair or redo work for rectification and will incur high cost and time consuming.</p>	<p>Preset as a divider to separate two or more different area of floor section of difference type or shape.</p> <p>Expansion function to prevent the crack line issue.</p> <p>uPVC Expansion joint installed permanently as a stopper to facilitate stop of work at end of the day and able continue a fresh start next day without any left over. No joining issue.</p> <p>Usage of UPVC Expansion Joint eliminate the requirement for operator wages, cost of cutting equipment and silicon material.</p> <p>Extra earning attained by eliminating the above costs.</p> <p>No water accumulation issue</p> <p>With the drainage line as a leveling guideline, pre-set the expansion joint for whole area of work before screed concreting works.</p> <p>Therefore, it results in :</p> <ol style="list-style-type: none"> a. Floor leveling is under control according to our planning. b. cutting work substituted c. silicon infill work wages substituted <p>Therefore, the floor area is flat and even, free from water accumulation, without bearing any extra cost for rectification</p>

Subject 2: Floor screeding for Ceramic Tiles surface

Traditional Manual Work Disadvantages	Expansion Joint Application Advantages
<p>Tiles are installed without any expansion and solely dependent to a layer of tiles adhesive. Tile spacer line unable to cater for tiles expansion, therefore it will pop up,at most of times in the middle of the floor.</p> <p>A Tiles pop are usually cracked, its not safe ,dangerous and can cause injuries to users.</p> <p>Its very costly affair to do rectification work.</p>	<p>The Middle of our HSL uPVC expansion joint design and it soft and elastic materials equivalent to silicon, able to absorb expansion and contraction function successfully and stop the possibility tiles pop up and its permanently stays in original layout without any alterations.</p>

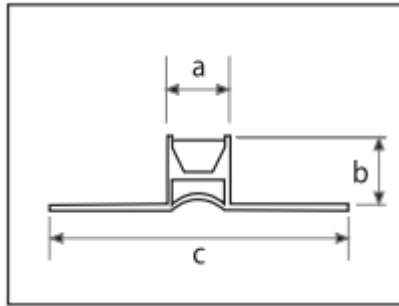


Model	*Dimension (mm)		Length (m)	Packing (pcs)	Colour	Quality Standard
	a	b				
30EXJ-9	9	30	2.5	50	light grey	common
40EXJ-15	15	40	2.5	50	light grey	common
50EXJ-15	15	50	2.5	50	light grey	common

* The tolerance limit is $\pm 1\text{mm}$.

Application Procedure:

1. Choose a suitable profile according to floor screed thickness :
for 30mm screed thickness,select 30EXJ-9
2. Measure and mark the setting guide for installing the profile using strip.
3. Apply a strip hip of cement mortar on the setting line.
4. Fix the profile by pressing to the strip hip cement mortar and ensure its position correctly without any tolerance.
5. After profile is set, pour the concrete mixture/pebble wash stone to both side of profile at the floor area.



Model	*Dimension (mm)			Length (m)	Packing (pcs)	Colour	Quality Standard
	a	b	c				
FJX-8	8	10	38	2.5/3.0	50	light grey	common
FJX-11	8	12	38	2.5/3.0	50	light grey	common

* The tolerance limit is $\pm 1\text{mm}$.

Application Procedure :

1. Choose a suitable profile according to floor screed thickness :
for 8mm tile thickness, select FJX-8
for 10mm tile thickness, select FJX-11
2. After levelling of screed is done, identify and mark the profile location according to architect drawing.
3. Apply mortar adhesive on strip of marked line in the designated area.
4. Fix the profile by pressing on the strip mortar adhesive.
5. After profile is set, install the tile on both side following the guideline.