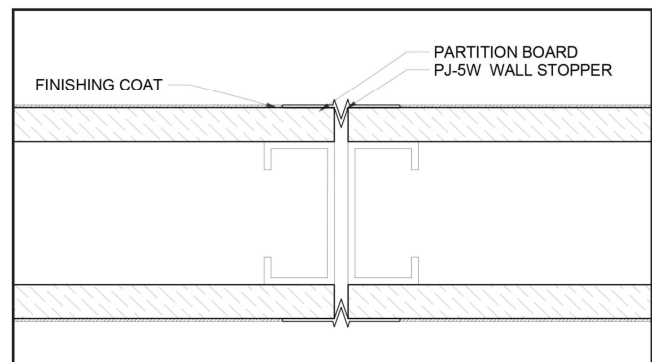
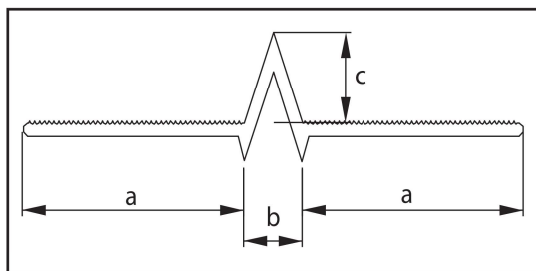
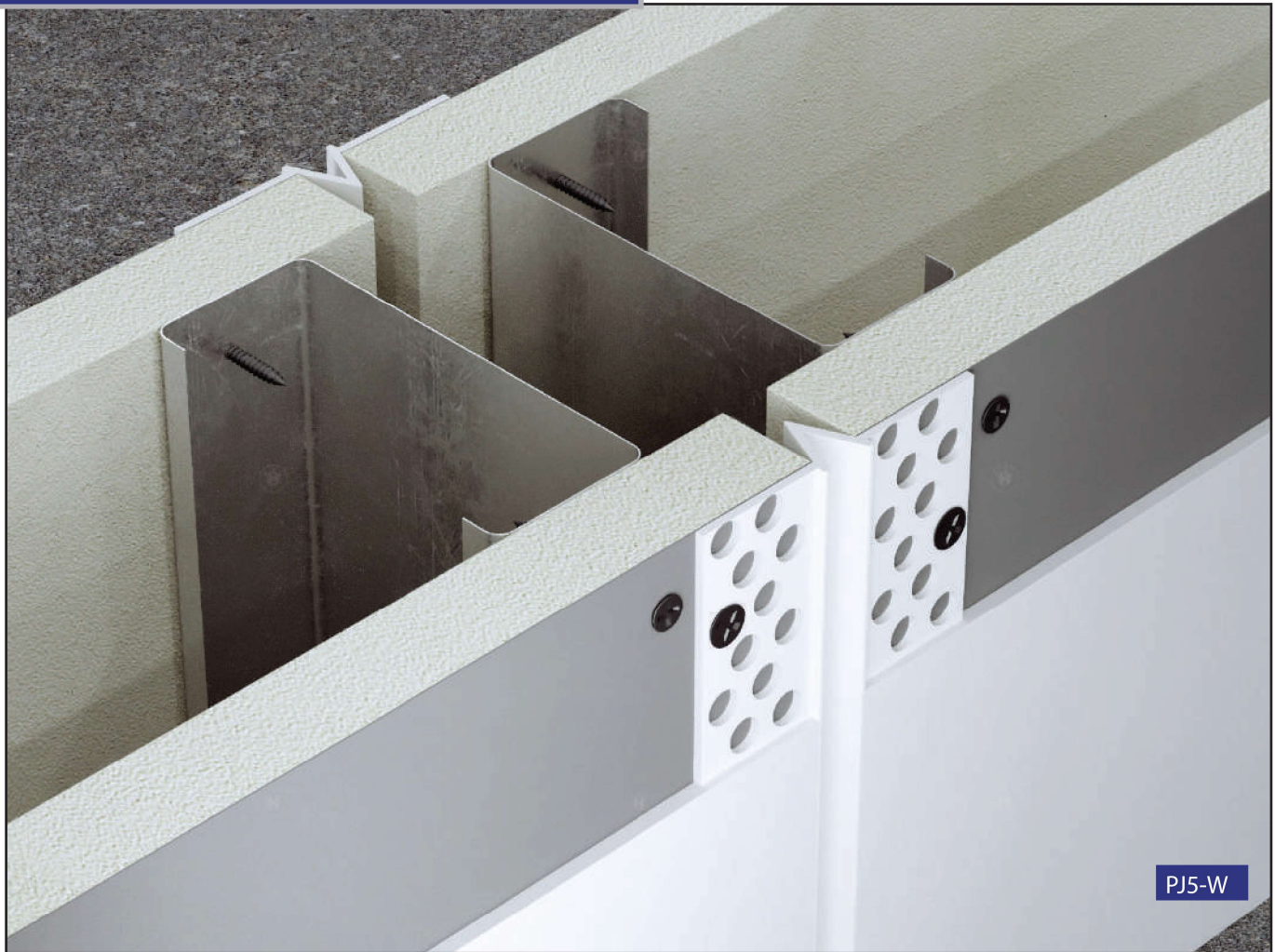


Middle Expansion Joint Profile



Model	*Dimension (mm)			Length (m)	Packing (pcs)	Colour	Quality
	a	b	c				
PJ-5W	17	6	4	2.5	100	White	Green
R-PJ-5W	17	6	4	2.5	100	White	Premium

* The tolerance limit is ± 1 mm

A-Angle® uPVC Drywall Control Joint Middle Expansion Joint Profile

Product Description

- uPVC Drywall Control Joint to provide aesthetically finishing edge and surface that can withstand movement/vibration without damage between both drywall partition and plaster ceiling board.
 - Drywall Control Joint has been designed for movement of within 5mm in each direction.
- Excellent chemical resistance to most oils, alcohols, petrol and fats. Avoid contact with aromatic and chlorinated hydrocarbons, ketones, nitro compounds, esters with cause some swelling.
- Suitable to use below 60°C.

Certification

- Trusted quality with SIRIM CERTIFICATION.
- Quality management with ISO CERTIFICATION.
- Comply with GREEN LABEL SINGAPORE STANDARD.

Area of Applications

For middle expansion groove joint between gypsum board drywall partition/plaster Ceiling.

Application Procedure

1. Make sure to leave middle space around 6mm between drywall partition/plaster ceiling panel during installation.
2. Fix the Upvc Drywall Control Joint at the middle space of 6mm left for installation of plaster ceiling board / Drywall board.
3. Using partition screw at every 6 inches interval at the both side of the wing.
(Partition screw specification: taper head screw 8mm, Screw bar size diameter 2mm)

Storage

Stored vertically out of direct sunlight or extreme temperatures or put in flat if supported along entire length.

*For further information or technical detail, kindly contact our sales representative.