

# BA-666

## THE NEW GENERATION OF PLASTERING SOLUTION

BA666 is a special formulated interface bonding agent designed for internal and external plastering works that suit today's construction needs. It is made of emulsify-able vinyl acetate homopolymers coalescing with plasticiser agents and added additives for improving the bonding strength of various substrates; such as smooth concrete walls and ALC/AAC/Light weight blocks

### Where To Use

- Internal and external plastering
- Internal skim coating
- Renders base treatment
- All cementitious back screeds
- New and old plastered or concrete surfaces
- Concrete surface
- Pre-cast concrete panel
- Cement rendered surface
- Cement sand block wall
- ALC/ AAC/ Light weight block

### Application Instructions

- Surface preparation - The surface must be structurally sound and clean, free of oil, grease, wax, dust sand, dirt, laitance, paints, efflorescence, curing compounds, loose materials of any type. If the surface is questionable, apply a small test patch of **BA666**. Allow to completely dry and observe for any sign of lifting, wrinkling, peeling or curling. If these occurred, additional surface preparation is recommended. Recommending cleaning methods by washing or high-pressure water jets.
- **BA666** can be applied with paint roller of paint brush.
- Open the original packing and use as it is, do not dilute with water or solvent. Do not add any admixture.
- Never shake and box mix as to entrap air.
- Apply **BA666** to the treated surface evenly. Thin continuous unbroken film is recommended. Allow **BA666** to dry approximately 30 minutes of drying time, subsequent activities can be carried out.
- Application of plastering, skim coating or renders shall be performed within 10 days provided **BA666** condition is clean, dust free, uncontaminated and intact.
- Do not apply to wet surface where there may be hydrostatic pressure such as retaining walls and swimming pool.
- Do not apply to frozen or frost covered surface or the temperature is below 50°F (10°C).

## BA- 666

### Product Data

Packaging	20 Liter / Pail
Colour	Blue
Application Method	Can be applied with paint roller or paint brush
Coverage	Approximately 10m <sup>2</sup> - 15m <sup>2</sup> / liter depending on the method of application, temperature, porosity and texture of the substrate/ surface.
Drying Time	Approximately 30 minutes after applied, depending on the temperature and humidity (18°C- 45°C ).
Open Time	10 Days
Fire Hazard	Non-flammable
Toxicity	Non-toxic
Shelf Life	12 Months
Storage	Store in protected areas where ambient temperature is between 50 °F- 90°F (10°C- 37°C ).
Clean Up	Cleaning may be accomplished with water immediately after use.



# Work Sequence for BA-666



1. A layer of **BA666** on substrate.  
Wait until surface dry estimate  
30 minutes - 1hour (Depending  
on weather condition)



2. Creteplus-TE (120g) + Cement  
(50kg) (Dry mix)



4. Mix with Water (7.5L-8.5L)



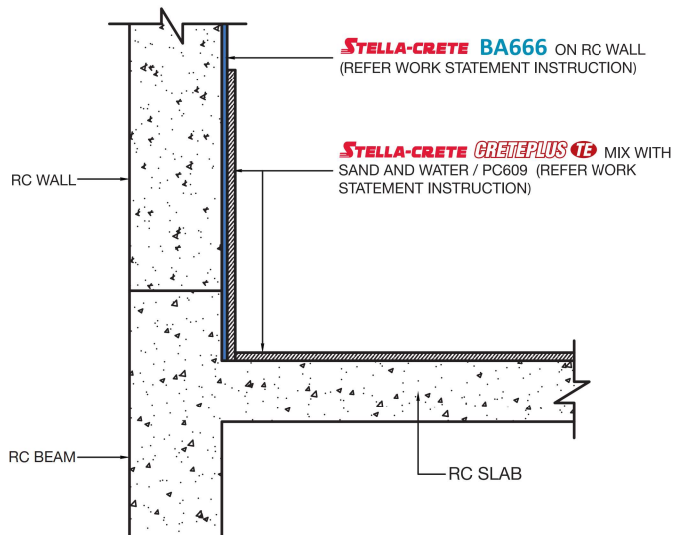
3. Mix Creteplus-TE + Cement +  
Sand (Optional)



5. Stir Evenly



6. Proceed with plastering on  
treated substrate



TYPICAL SECTION STELLA CRETE AT RC WALL  
SCALE 1:10