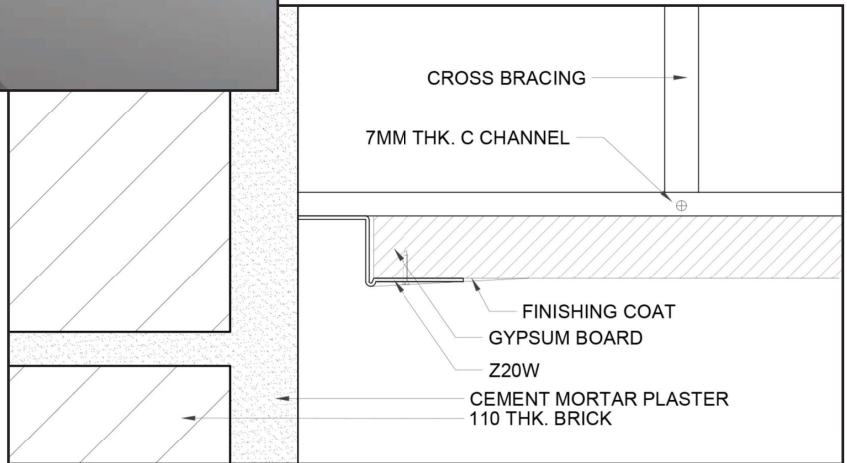
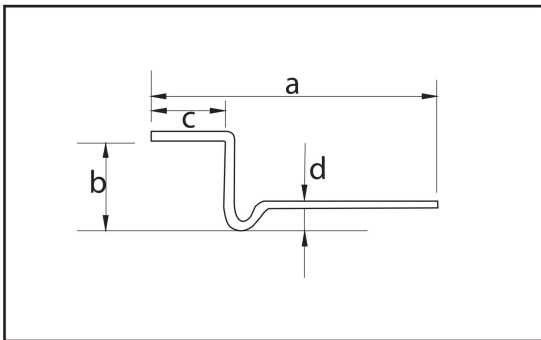


Z-Shape Profile



Model	*Dimension (mm)				Length (m)	Packing (pcs)	Colour	Quality
	a	b	c	d				
Z10W	36	8	10	1	2.5	100	White	Green
Z20W	46	20	20	1	2.5	100	White	Green
R-Z10W	36	8	10	1	2.5	100	White	Premium
R-Z20W	46	20	20	1	2.5	100	White	Premium

* The tolerance limit is ± 1 mm

A-Angle® uPVC Plaster Ceiling Shadow Line Z-Shape Profile

Product Description

- uPVC Plaster Ceiling Shadow Line for surrounding gypsum ceiling board edge for shadow line purpose.
 - Provide grooving for interior suspending gypsum board ceiling panels to cover crack line formed on joint between wall and ceiling. Able to counter check the plastering/render/skim-coat wall flatness correction can be done immediately.
 - With the UPVC Shadow line usage the plastering/render/skim-coat wall surface level unevenness or plaster ceiling board minor displacement, these can be immediately can be rectified by doing wall touch up work.
 - Usage of Plaster Ceiling Shadow line will completely eliminate crack formation.
- Excellent chemical resistance to most oils, alcohols, petrol and fats. Avoid contact with aromatic and chlorinated hydrocarbons, ketones, nitro compounds, esters with cause some swelling.
- Suitable to use below 60°C.

Certification

- Trusted quality with SIRIM CERTIFICATION.
- Quality management with ISO CERTIFICATION.
- Comply with GREEN LABEL SINGAPORE STANDARD.

Area of Applications

For plaster ceiling application.

Application Procedure

1. Install the Upvc Shadow line at edge of plaster ceiling board using screw.
2. Install the plaster ceiling board which already fitted with Upvc Shadow line at ceiling frame.
(Partition screw specification: taper head screw 8mm, Screw bar size diameter 2mm)

Storage

Stored vertically out of direct sunlight or extreme temperatures or put in flat if supported along entire length.

*For further information or technical detail, kindly contact our sales representative.